

Accessories Cutting Equipment

Mini Table Shear 1001
101mm cut

\$550+gst



ACE-Shear101mm plastic
(HMH EQ-1001-PL)

radius

3.12mm 1/8"

4.36mm 3/16"

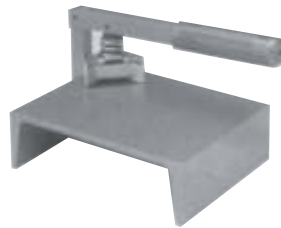
6.35mm 1/4"

7.82mm 5/16"

9.37mm 3/8"

12.5mm 1/2"

Corner rounder \$440+gst
with one die
extra dies
\$220+gst each



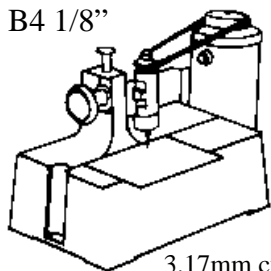
ACE-Corner rounder
(HMH EQ-CM40A-PL - Base)
Cnr & Size Reqd

ACE-Bevelling machine B4 1/8"

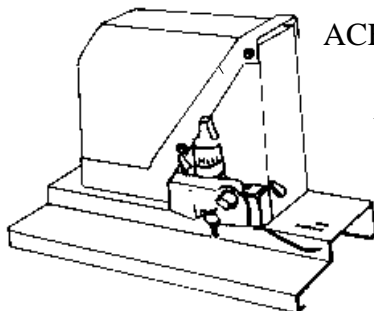
(Gravograph 19919)

simply slide the plate
along the guide to
produce a quality
finished edge

\$1,250 +gst



3.17mm cutter
14,000 RPM



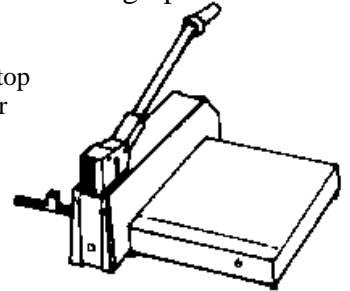
ACE-Bevelling machine B6
(Gravograph 19923)

with its own built in swarf
suction and radius device

6.35mm cutter
24,000 RPM

\$2,390+gst

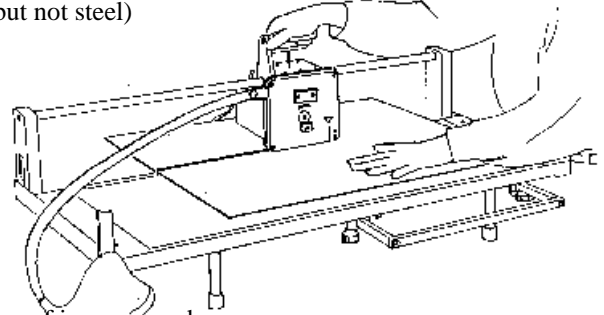
CS 320mm safety shear from Gravograph
smooth geared action
totally enclosed blade
easy to set back stop and front stop
guide can be moved to centre for
faster cutting action



ACE-Shear plastic 310mm (Gravo 20198) \$1,560 +gst
ACE-Shear metal 310mm (Gravo 20199) \$1,560 +gst
ACE-Shear re-sharpen (STS workshop)\$120 +gst
ACE-Safety bar for 310mm (STS workshop 6mm) \$140
ACE-Safety Shear Blade (10250) \$290.95

Varga Safety Saw

cuts all engraving sheet material
(but not steel)



all swarf is vacuumed
into the swarf bag during cutting

ACE-Varga Saw 6mm max (Gravograph 21762) \$4,100+gst
ACE-Varga Blade 120x36 teeth (Gravograph 21796A) \$222+gst
ACE-Varga Brushes-carbon (Gravograph 68924000) \$26.65+gst



Saw blade (A-6093BLD) \$170
Motor brushes (68924000) \$35

Gravograph Cutter Grinder CG30

The latest cutter grinder
from Gravograph.
Easy to use and whisper
quiet

\$2,855 + GST



ACE-Cutter Grinder-CG30
(Gravo 22797+20125+collett)
includes one collett of your choice

Additional collets available:

1/8" Collett	20890	\$110
11/64" Collett	20891	\$110
1/4" Collett	20892	\$110